



Burlövs  
kommun

ENGELSKA



# Welcome to preschool in Sweden!

The Swedish preschool is for children between 1-5 years and focuses on care, development and learning.

## Why is preschool important for your child?

There is broad research support that preschool has positive effects for children's development and learning. Children who have attended preschool have better language skills in Swedish and achieve higher knowledge results in school and succeed better in life than children who have not participated in preschool activities.

The preschool's language development approach is important for all children, but it is most important for children who have a mother tongue other than Swedish. For some of the children who grow up with two or more languages, preschool is the only place where the child has the opportunity to learn Swedish.

An important part of the preschool's work is also to support the children's abilities to experience, regulate and express emotions, form close and secure relationships and explore their surroundings.



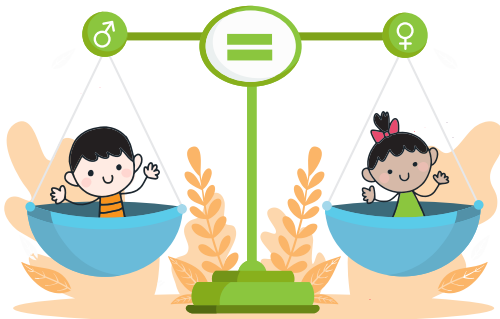


Burlöv  
kommun



## Governing documents and democracy missions

The preschool is governed by the Curriculum for preschool, Lpfö 18 and the Education Act (2010:800) which is decided by the Swedish Parliament and its elected politicians in Sweden. All work in preschool is based on Swedish society's laws, democratic values and the UN convention on the Rights of the Child, such as the equal value of girls and boys and equality of all people.



## Open preschool

Familjecentralen Samovaren, is a meeting place for guardians with children 0-6 years.

**Address:** Svenshögsvägen 6, in the same building as the health center in Arlöv. You can come here to let your child play with other children and talk to other parents of small children. Free and no pre-registration required.

**Website:**

[www.burlov.se/samovaren](http://www.burlov.se/samovaren)

**Facebook:**

[facebook.com/familjecentralenSamovaren/](https://facebook.com/familjecentralenSamovaren/)

## General preschool

From the autumn term of the year the child turns three, it is entitled to general preschool 525 hours per year, which corresponds to 15 hours a week. The general preschool is free of charge.

## Choose and apply for preschool

The application for a place at preschool is made by the guardian, no later than four months before the child is to start.

The application is made via e-service:

[www.burlov.se/ansokforskola](http://www.burlov.se/ansokforskola)

